



Brixton Hill, Brixton, SW2

3 bedroom flat - purpose built for sale

£425,000

Leasehold

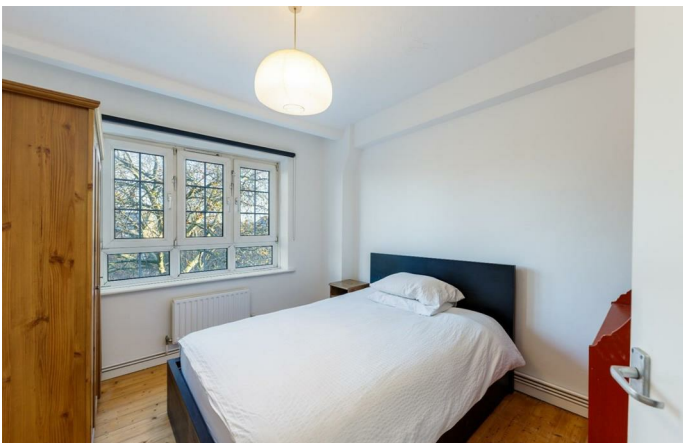
Property Details

The property comprises a spacious reception, complete with hardwood flooring and a feature fireplace. This room perfect for relaxing and unwinding or entertaining guests, adjacent to a modern and substantial eat-in kitchen. The kitchen provides plenty of storage options and surface space. All three bedrooms are generous doubles, ideal for sharers or anyone looking to let the spare room. The dimensions allow for additional storage options and work-from-home spaces if required. A contemporary family-sized bathroom completes the flat.

Features

- Three double bedrooms
- Over 1000 square feet of internal space
- Bright, airy and well-presented
- Stunning views of the London skyline
- Secure, purpose-built block
- Characterful features
- Local amenities of Brixton Hill
- Rapid transport links to the city
- Chain-free

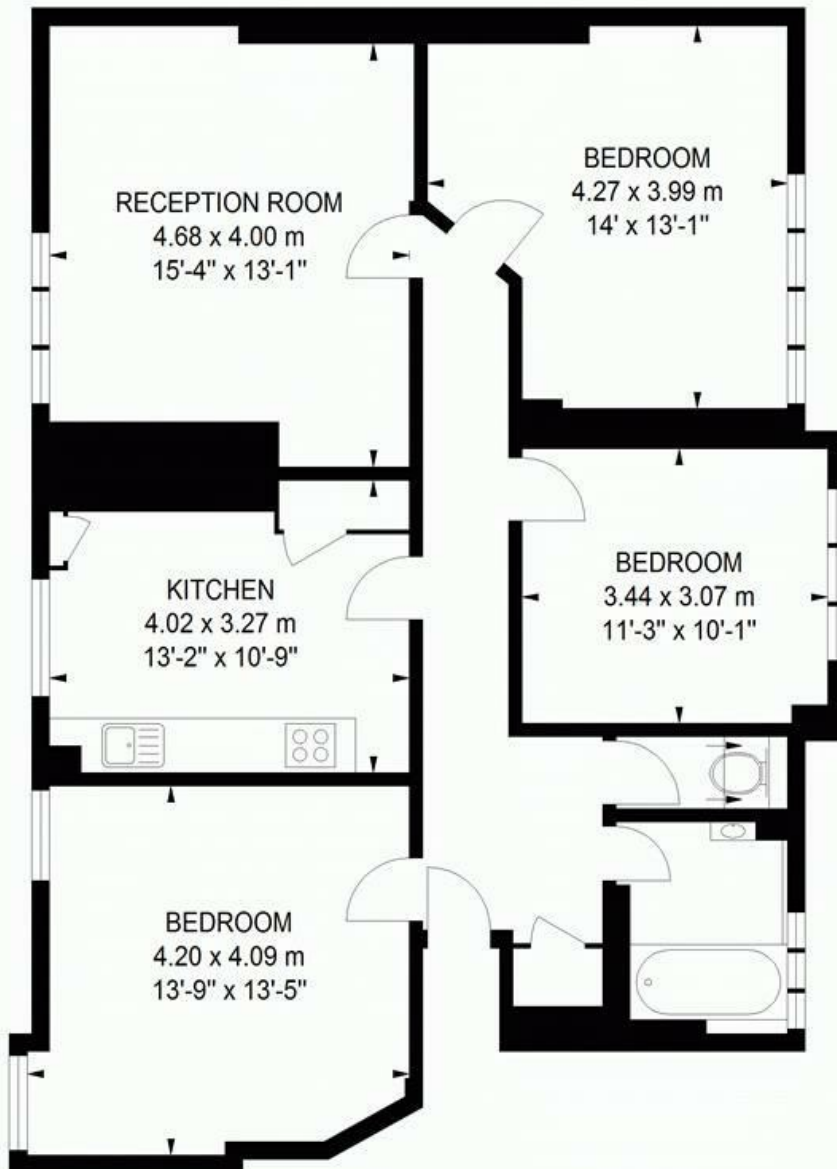
Council tax band C EPC rating (null)



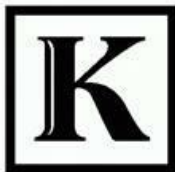
Renton Close, Brixton Hill, SW2

3 Bedroom Flat

Approximate Internal Area : 1044 sqft / 97 sqm



Fourth Floor



Floor Plan produced for Keating Estates by Mays Floorplans © . Tel 020 3397 4594
Illustration for identification purposes only, not to scale
All measurements are maximum, and include wardrobes and window bays where applicable

Brixton Hill, Brixton, SW2

