

Fairmount Road, SW2

2 bedroom flat - conversion to let

£410 Per Week

Furnished

Property Details

A characterful two bedroom flat in an attractive Victorian conversion on a sought after road. Situated in Fairmount Road the property is a short walk from local shops, Brockwell Park and the enormous variety of nightlife on offer in central Brixton. With three overground stations on different lines within easy reach, as well as first stop on the Victoria line at Brixton tube station, its location cannot be overstated.

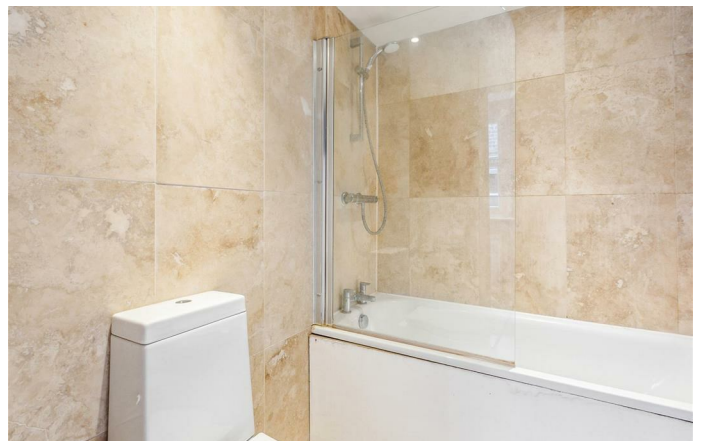
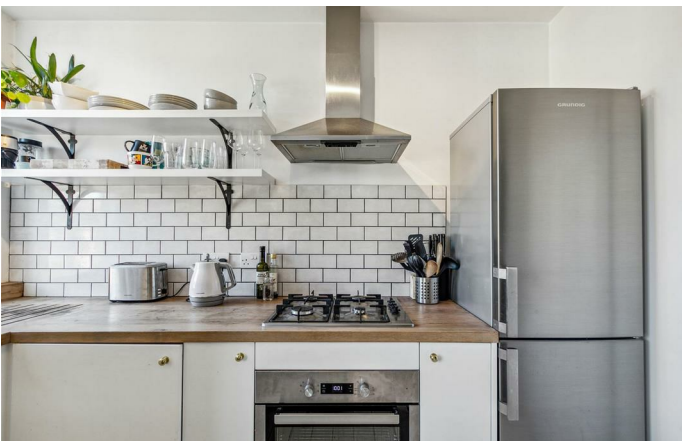
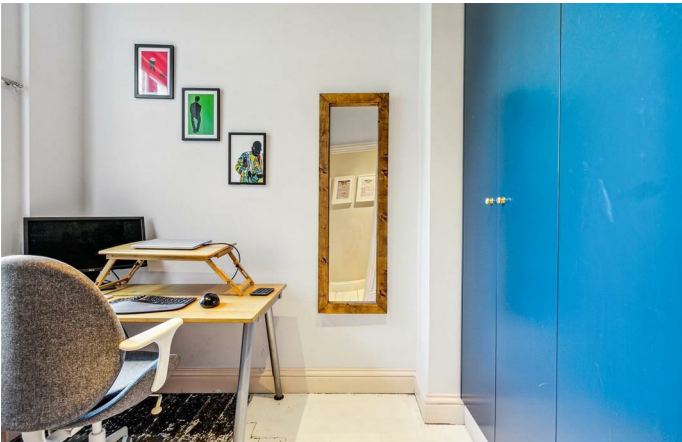
This flat comprises a light and airy open-plan living area which spans the width of the building with a bay window and ample room to relax and dine. Two bedrooms share a contemporary bathroom, all off a split-level entrance hall. The master bedroom is tucked away at the building with views over the neighbouring gardens. The smaller second bedroom/study is ideal for anyone looking to use as a guest room/ home office. The flat is a tasteful mix of modern design and characterful features. Fairmount Road is situated a ten-minute stroll to the new culinary and nightlife mecca of South London, Brixton and a five-minute stroll to the green open spaces of Brockwell Park. A fifteen-minute walk across the park brings you to Herne Hill station and the many pubs, cafes and restaurants of Herne Hill. This characterful first floor flat is perfect for anyone who wants to be close to the action but would prefer to avoid the car horns and the noise of late night revellers. First stop on the Victoria Line at Brixton tube station is a short stroll down the hill and multiple buses run up and down Brixton Hill, whisking you down to the tube within a few minutes and through into central London. The buses offer a great alternative to the tube and train stations for commuters into the city centre. Fortunately, this flat is a stone's throw from a local bus stop with buses coming and going every other minute.

Council tax band C

EPC rating C (73)

Features

- One double bedroom
- Study/ Second Room
- Victorian Conversion
- Characterful features
- Bright and airy throughout
- Close to Brockwell Park
- Sought after location
- 10-minute walk to the Victoria line and Brixton High Street



Fairmount Road, SW2

K

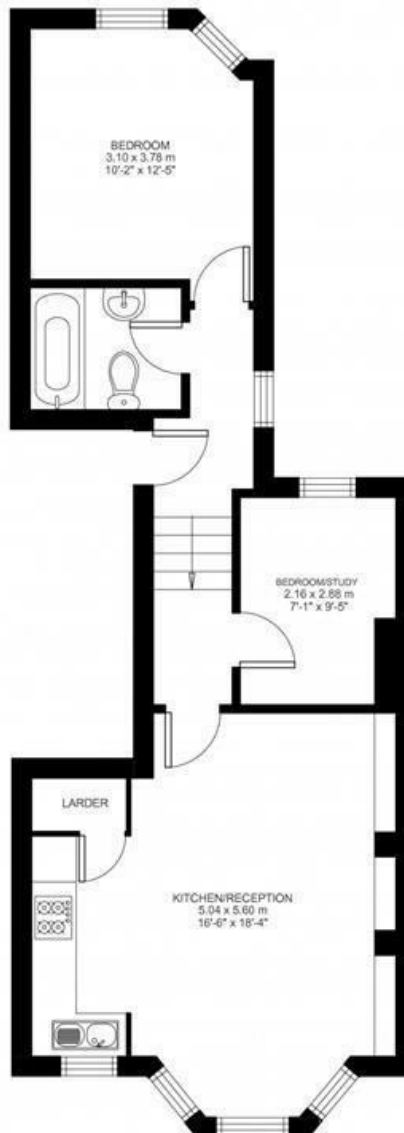
Fairmount Road

2 Bed flat

Approx internal area:

569 sqft 53 sqm

While we do try our very best, floor plans are produced as a guide only and we take no responsibility for the precise accuracy with which any property is represented



First Floor



Fairmount Road, SW2

