

**Lambert Road, Brixton, SW2**

Null bedroom flat to let

**£265 Per Week**

Part furnished

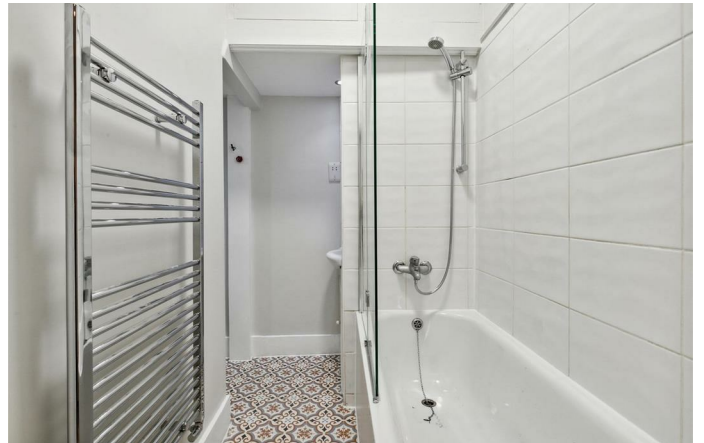
## Property Details

This is a great studio flat that has been newly refurbished. Large and airy with a large room, easily spacious enough to hold a bedroom area with large double bed and all furniture for storage, a sofa area for lounging, and a seating area for dining. A modern galley kitchen is in a large recess of the room, separating the kitchen from the rest of the property. The bathroom is large, bright and clean. The street is a lovely residential street in this great pocket of picturesque Victorian housing, minutes from Brixton and Clapham, with all they have to offer for lifestyle and transport, a five minute walk from Brockwell park and Sainsbury's and Tesco supermarket.

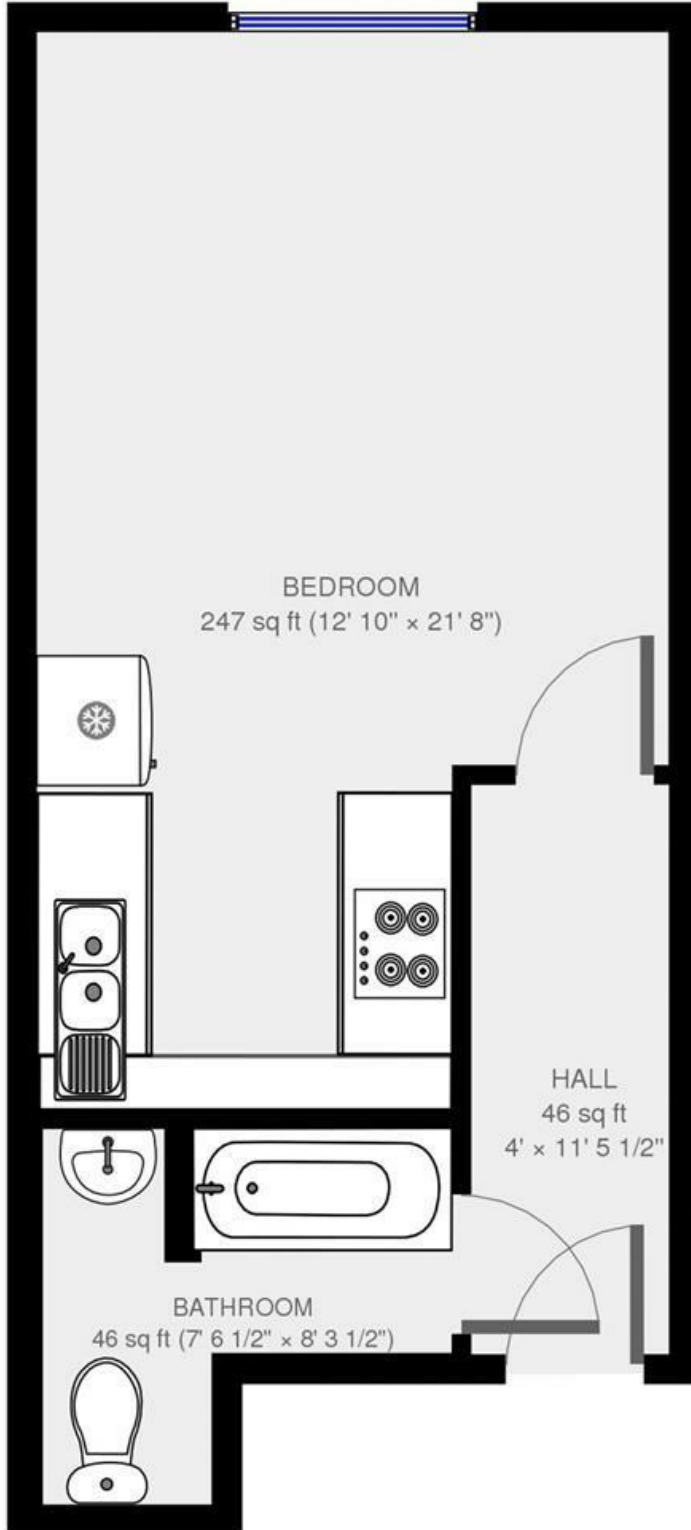
## Features

- Victorian
- Studio flat
- Around a 15 minute walk to Brixton underground
- Around a 10 minute walk to Brockwell park
- Bright and airy
- Spacious
- Newly refurbished

Council tax band A    EPC rating C (75)



## Lambert Road



BEDROOM  
247 sq ft (12' 10" x 21' 8")

HALL  
46 sq ft  
4' x 11' 5 1/2"

BATHROOM  
46 sq ft (7' 6 1/2" x 8' 3 1/2")

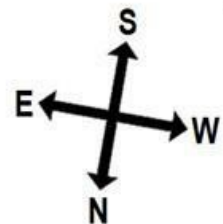
First Floor

  
Studio.

Approx internal area:

**350 sqft 33 sqm**

While we do try our very best, floor plans are produced as a guide only and we take no responsibility for the precise accuracy with which any property is represented



Lambert Road, Brixton, SW2

