

Lambert Road, Brixton, SW2

2 bedroom flat to let

£380 Per Week

Part furnished

Property Details

Keating Estates are proud to present to market a beautiful newly refurbished well-located one double bedroom apartment with the addition of a study/spare single room. This fantastic first floor flat offers well-appointed living space, stylish fixtures and fittings, tasteful décor throughout and a great location with Brixton.

Flooded with natural light, the heart of the home is the stunning open-plan living space. This appealing space is sure to be used on a regular basis, with a brand new fitted kitchen offering comfortable dimensions to relax, unwind, dine and entertain friends whilst the rich array of festivities and nightlife available in central Brixton are mere minutes away when required. The two rooms at the rear of the property. The main bedroom is a tranquil space with comfortable dimensions, whilst the second room offers a flexible space for a study/spare single room followed by a new sleek, stylishly tiled bathroom.

Living here you will benefit from all that Brixton offers, from the celebrated cuisine of Brixton Village to the music venues and nightlife the area is famous for. There are local amenities within a two-minute walk, as well as a selection of pubs, bars, restaurants and supermarkets on Brixton Hill and Effra Road. It is also a seven-minute stroll to Brockwell Park, claimed by some as one of the finest parks in London. Brixton tube station is an eight-ten minute walk down the hill, and there is a bus stop within a

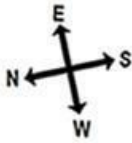
Features

- Double bedroom and Study/Office
- Family bathroom
- Open plan reception and kitchen
- Original features
- Bright and airy
- Close to transport links
- Quiet location
- Newly refurbished

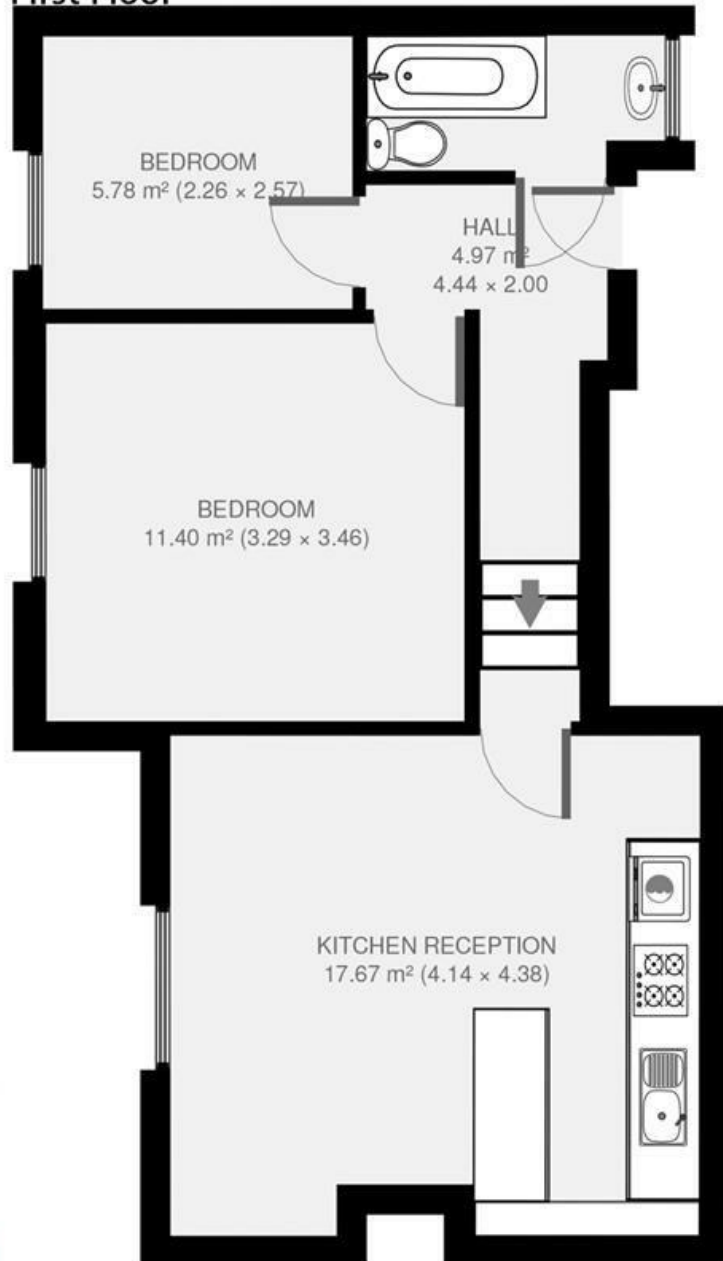
Council tax band B EPC rating D (64)



Lambert Road



First Floor



2 bed Flat.

Approx internal area:

885 sqft 45 sqm

While we do try our very best, floor plans are produced as a guide only and we take no responsibility for the precise accuracy with which any property is represented

Lambert Road, Brixton, SW2

