



Marney Road, Clapham Common, SW11

1 bedroom flat to let

£375 Per Week

Unfurnished

Property Details

This flat offers a lovely spacious living room alongside a modern kitchen/dining room which opens onto the large garden with paved patio. The bedroom is great size with a lot of natural light. The property is a short walk from the culinary and nightlife wonders of Clapham Common, Northcote Road and Battersea, as well as the great transport links into the city centre and the lovely Clapham Common.

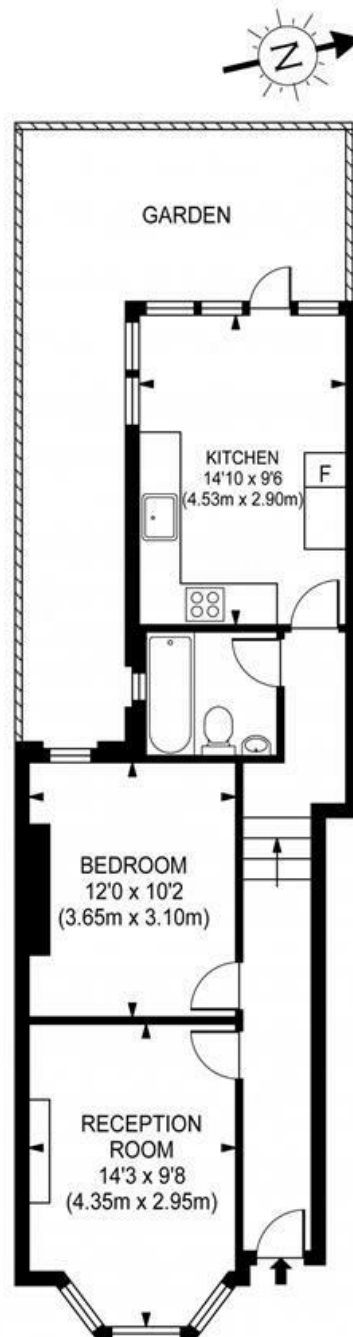
Features

- One bedroom
- One bathroom
- Unfurnished
- Great transport links
- Bright and airy
- Close to Clapham Common

Council tax band D EPC rating C (69)



Marney Road, Clapham Common, SW11



Gross Internal Area 548 sq ft/ 51 sq meters

Whilst every attempt had been made to ensure the accuracy of the floorplan shown, all the measurements, positioning fixtures, fittings and any other data shown are an approximate interpretation for illustrative purposes only and are not for scale. No responsibility is taken for any error, omission, miss-statement or use of data shown.

Marney Road, Clapham Common, SW11

