



## Horsford Road, Brixton, SW2

1 bedroom flat - conversion for sale

**£450,000**

Share of Freehold

### Property Details

Almost 500 square feet of internal living space is well-appointed throughout, offering fantastic room dimensions for comfortable living alongside some handy storage options. The kitchen and reception room both benefit from garden access and plenty of space to dine, relax, unwind and entertain guests, with a seamless feel between the two spaces. The eat-in kitchen is particularly appealing with integrated appliances and sleek modern cabinetry, offering plenty of storage and surface space. High ceilings and a large bay window add to the appeal of the bedroom, which provides generous dimensions for storage options, a work from home space, dressing table or anything else that may be required. The bathroom that completes the property is family-sized and contemporary, in keeping with the rest of the property.

Council tax band

EPC rating D (65)

### Features

- One bedroom
- Private Garden
- Victorian conversion
- Almost 500 square feet of internal space
- Bright and airy throughout
- Recently refreshed
- Central Brixton in minutes
- Share of freehold
- Chain-free



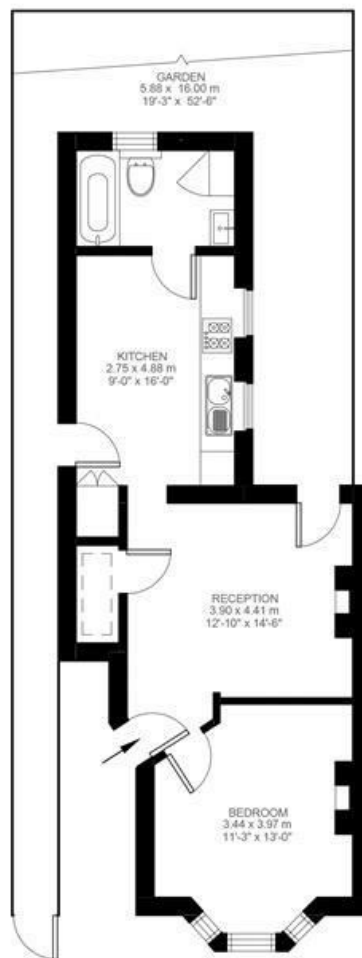


Horsford Road, Brixton, SW2

**Horsford Road, Brixton Hill, SW2**

**1 Bedroom Flat**

Approximate internal area: **494 sqft 46 sqm**



Ground Floor



While we do try our very best, floor plans are produced as a guide only and we take no responsibility for the precise accuracy with which any property is represented.



Horsford Road, Brixton, SW2

