**Baytree Road, Brixton, SW2**

2 bedroom flat - purpose built for sale

£425,000

Leasehold

Property Details

Well-presented throughout, the flat is finished with stylish, neutral décor. The open-plan reception is characterful and bright with hardwood flooring and comfortable dimensions to lounge and dine, providing an ideal entertaining space. The adjacent kitchen is complete with plenty of storage options and surface space. Both bedrooms are comfortable doubles with built-in storage, the principal bedroom is particularly spacious and the second room could easily be rented out or used to suit the needs of the purchaser. The modern bathroom is finished in an attractive blue tile. This lovely home is ready to move into, where the purchaser can take their time to personalise their new home.

Council tax band C **EPC rating C (76)**

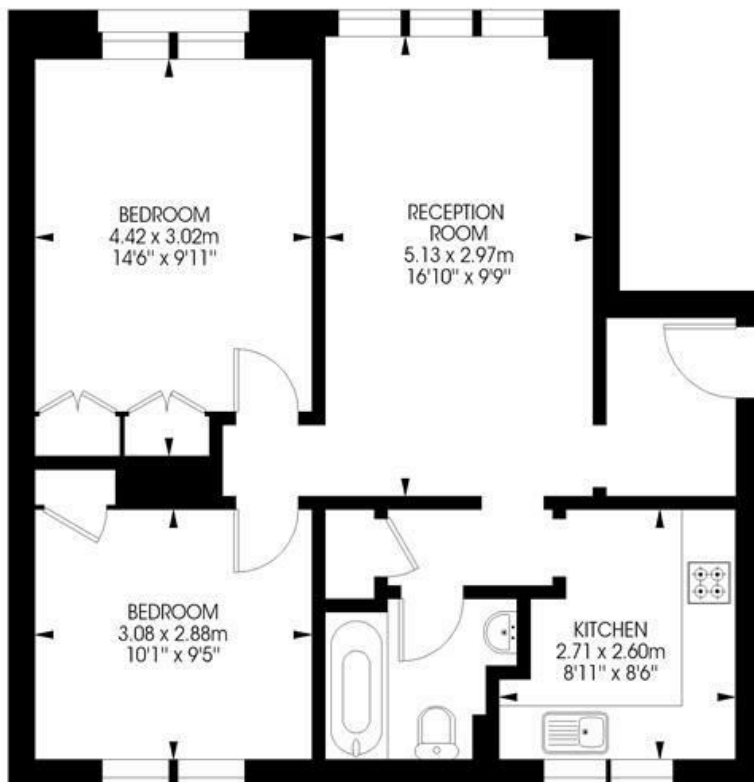
Features

- Two double bedrooms
- Bright and airy throughout
- Set back quietly from the road
- Well-maintained communal gardens
- Ideal central location, moments from Brixton tube station
- Victoria Line, Northern Line and Clapham Overground Station
- Short stroll from Brixton Village & Brockwell Park
- Clapham High Street within a fifteen minute walk

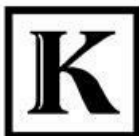


Arlington Lodge, SW2
2 bedroom flat

Approximate internal area: **624 sqft / 58 sqm**



Ground Floor



While we try our very best, floor plans are produced as a guide only and we take no responsibility for the precise accuracy with which any property is represented.

Baytree Road, Brixton, SW2

