



Jeffreys Road, Clapham, SW4

1 bedroom flat - purpose built for sale

£450,000

Leasehold

Property Details

Nestled away from the hustle of the street this bright apartment sits towards the rear of the building with an airy, open-plan living space forming the heart of this second floor home. A sleek modern, kitchen integrated with all the mod cons you may need feeds through to a charming lounge area, with space to wine and dine. The reception transitions out onto a sunny, South-West facing private terrace, with views over the pretty gardens below.

The bedroom is a generous double, a peaceful space flooded with light from floor to ceiling glass windows and plenty of storage options, including newly fitted wardrobes. Adjacent, a spacious luxury bathroom with a high standard of fittings. The flat has been built with modern living in mind and offers high-end finishes throughout. There is added storage in the form of a large utility cupboard in the hallway, ideal for hiding away all those items not needed on a daily basis.

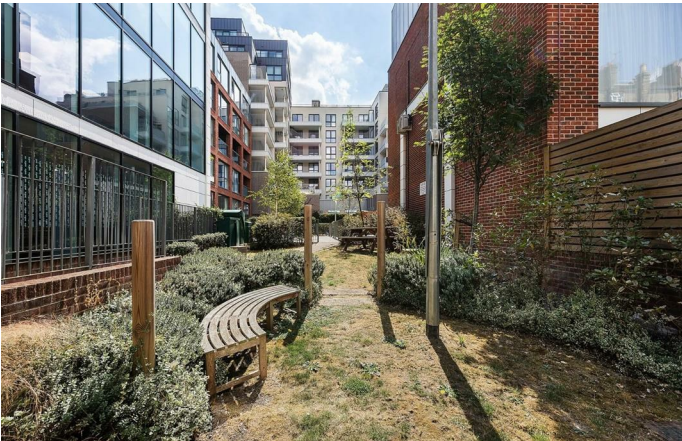
Ideally located a short stroll from Clapham High Street, Clapham North and Stockwell, offering fantastic transport links to appeal to a wide range of potential purchasers

Features

- One bedroom
- Private South-West facing terrace
- Almost 600 square feet of internal space
- Built with modern living in mind
- Secure friendly development
- Communal gardens
- Secure bike storage
- Moments from Clapham North and Stockwell with the Victoria and Northern Lines
- Clapham Common, Larkhall Park and Battersea Park, all with walking distance

Council tax band C EPC rating B (84)

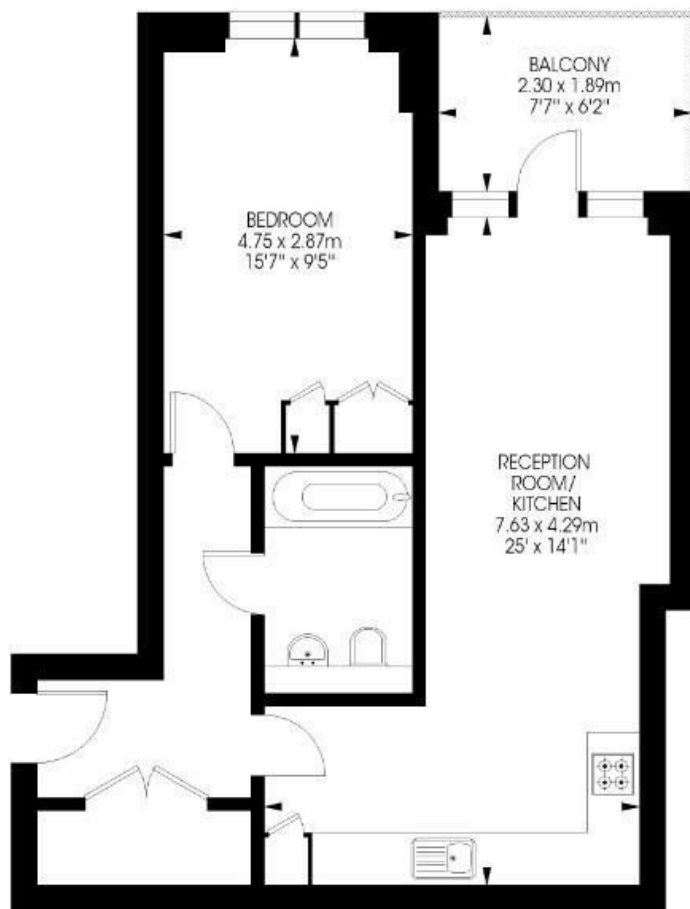




Jeffreys Road, Clapham, SW4

Jeffreys Road
Clapham, SW4
1 bedroom flat

Approximate internal area: **560 sqft / 52 sqm**



Second Floor



While we try our very best, floor plans are produced as a guide only and we take no responsibility for the precise accuracy with which any property is represented.

Jeffreys Road, Clapham, SW4

