

Hubert Grove, London, SW9

£399,950

1 bedroom flat for sale

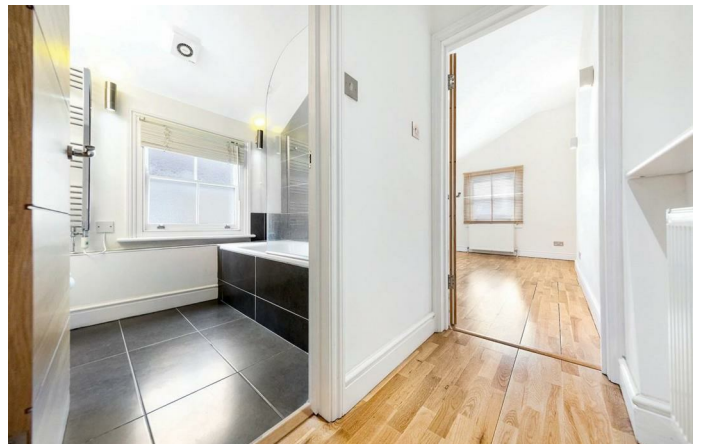
Property Details

A wonderfully bright, split-level, one double bedroom flat, perfectly nestled between Clapham (5 mins), Brixton (9 mins) and Stockwell (10 mins). With over 570 square feet of internal living space, this delightful top floor split level flat will appeal to purchasers looking to buy in all three of these sought-after locations. The property comprises an open-plan reception kitchen, a contemporary bathroom, a comfortable double bedroom and ample built-in storage. A neutral blank canvas, ideal for anyone looking to move into a new property hassle free and stamp their own mark over time. Chain-free.

Features

- Chain free
- Victorian
- Bright and airy throughout
- Sought after location

Council tax band C EPC rating C (69)





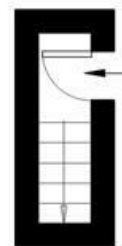
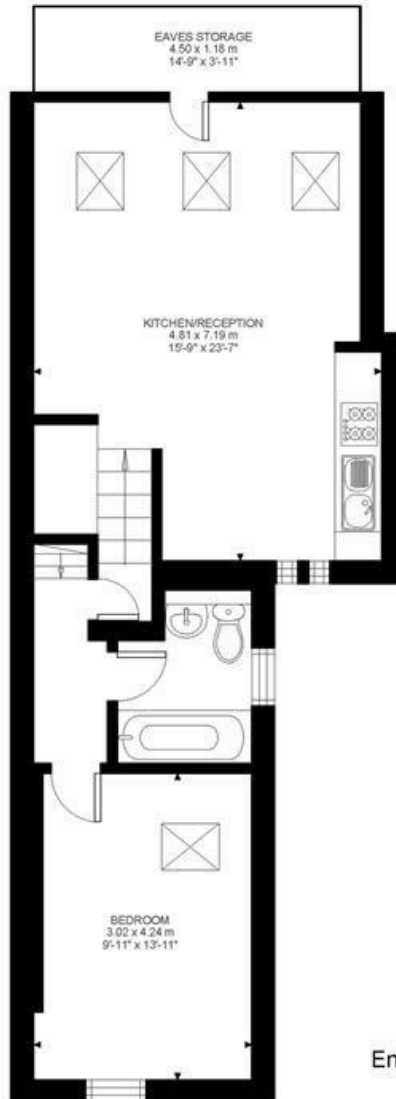
1 Bed flat

Approx internal area:

575 sqft 53 sqm

While we do try our very best, floor plans are produced as a guide only and we take no responsibility for the precise accuracy with which any property is represented

Hubert Grove



Entrance Second Floor

Second Floor



Hubert Grove, London, SW9

