



Helix Road, Brixton, SW2

5 bedroom house for sale

£1,300,000

Freehold

Property Details

A beautifully finished five double bedroom, three bathroom Victorian terraced house, situated in the heart of the ever-popular Josephine Conservation area. This tasteful and impressive home measures up at over 2100 square feet. To the ground floor is a welcoming reception room, where high ceilings compliment the feature fireplace and large bay window. Adjacent sits a spacious kitchen diner, flooded with natural light, this expansive room provides an abundance of space to cook, dine and recline, with bi-fold doors leading out to the manicured private garden. A neat modern WC completes the ground floor.

Arranged over the upper floors are five very generous double bedrooms. The principal bedroom spans the width of the house, the four further bedrooms are all endearing, peaceful spaces. Three attractive, contemporary bathrooms serve the house.

A perfect home, nestled in a leafy part of vibrant and thriving Brixton, on tree-lined Helix Road. Situated a ten-twelve minute stroll to all that central Brixton has to offer.

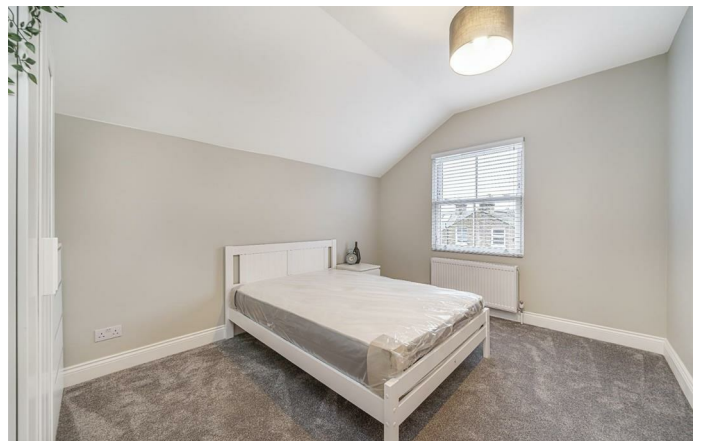
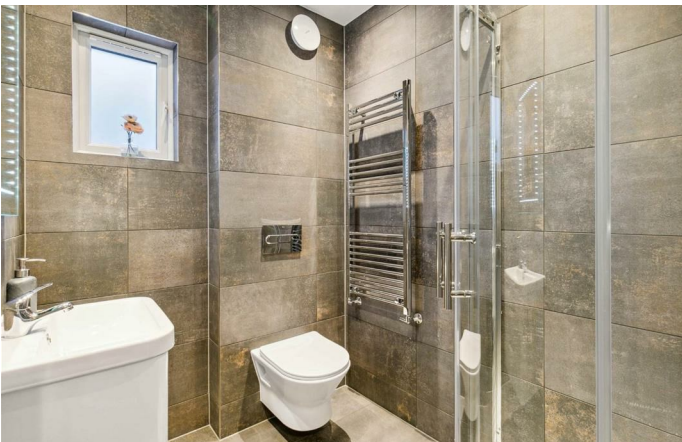
Council tax band F

EPC rating C (77)

Features

- Five double bedrooms
- Three bathrooms plus WC
- Victorian terrace house
- Over 2100 square feet of internal space
- Large manicured garden
- Bright and airy throughout
- Sought after location
- A ten minute walk to central Brixton
- A short stroll to Brockwell Park
- Chain-free





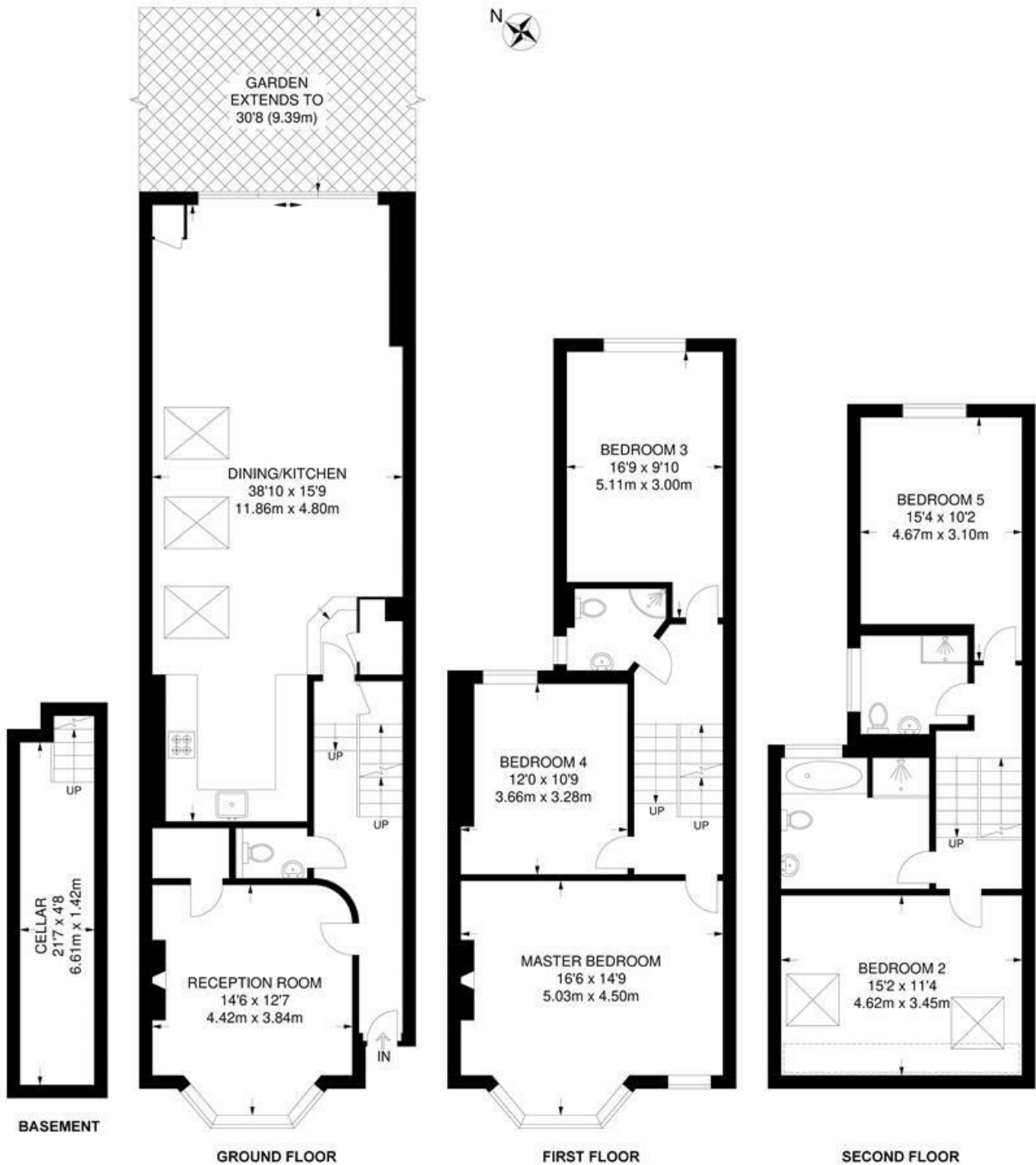
Helix Road, Brixton, SW2

Helix Road, SW2
5 Bedroom House

APPROXIMATE INTERNAL AREA: **2022 SQ FT / 187.8 SQ M**

APPROXIMATE CELLAR: **105 SQ FT / 9.8 SQ M**

APPROXIMATE TOTAL INTERNAL AREA: **2127 SQ FT / 197.6 SQ M**



While we try our very best, floor plans are produced as a guide only and we take no responsibility for the precise accuracy with which any property is represented.

Helix Road, Brixton, SW2

