



Lambert Road, Brixton, SW2

2 bedroom flat - conversion for sale

£499,950

Share of Freehold

Property Details

With impressive high ceilings, large sash windows and hardwood flooring, the flat boasts an appealing atmosphere that runs throughout. The open-plan reception at the front of the property is no exception, boasting a fantastic industrial-style kitchen, a breakfast bar and a cosy living area complete with a feature fireplace. The room is perfect for entertaining guests or relaxing and unwinding. Peacefully arranged at the rear of the property, both bedrooms are comfortable doubles. The principal is particularly spacious and boasts tasteful built-in storage options. The second bedroom is a comfortable double room, currently set up as a study, with a double wall-bed/wardrobe unit built-in, perfect for maximising the space on offer. The bathroom that completes the flat is modern and beautifully finished, with attractive fixtures and fittings.

Features

- Two double bedrooms
- First floor
- Victorian conversion
- Beautifully finished throughout
- Bright, airy and characterful
- Desirable road equidistant to Brixton and Clapham High Streets
- Walking distance to Northern and Victoria tube lines
- Share of freehold

Council tax band C EPC rating C (71)



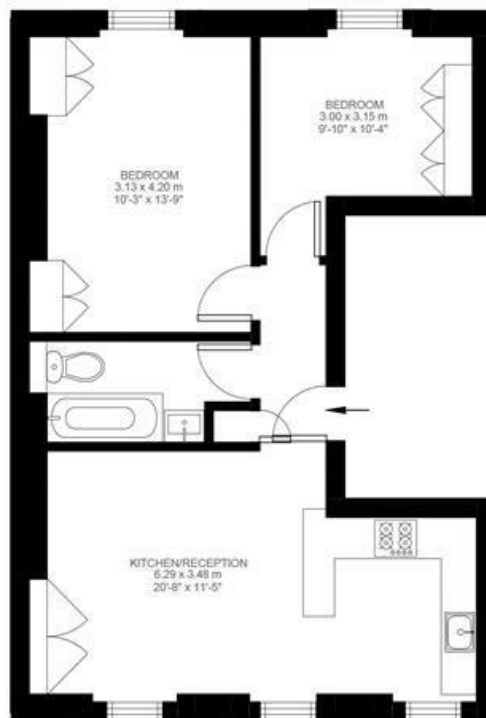


Lambert Road, Brixton, SW2

Lambert Road, Brixton, SW2

2 Bedroom Flat

Approximate internal area: 538 sqft 50 sqm



First Floor



While we do try our very best, floor plans are produced as a guide only and we take no responsibility for the precise accuracy with which any property is represented.

Lambert Road, Brixton, SW2

