



Effra Court, Brixton Hill, Brixton, SW2

1 bedroom flat - purpose built for sale

£315,000

Leasehold

Property Details

Almost 500 square feet of internal space has been considerably utilised, without wasting any square footage on unused hallways. As a result every room feels airy, bright and comfortable, with plenty of space for storage options. The bedroom is peacefully positioned away from the main road and sits adjacent to a spacious reception room, which feeds through to a well-equipped contemporary kitchen. A second reception follows on, which could easily be re-purposed as a second bedroom and this space provides access to a contemporary bathroom.

Council tax band C EPC rating C (80)

Features

- One bedroom
- Two reception rooms
- Almost 500 square feet
- Purpose-built
- Bright and airy
- Additional storage available for rent within the building
- Communal garden
- Ideal location moments from central Brixton
- Brockwell Park in easy reach
- Chain-free

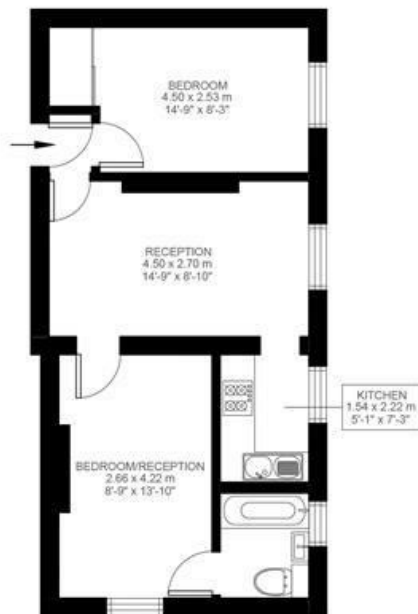


Effra Court, Brixton Hill, Brixton, SW2

Brixton Hill, Brixton, SW2

1 Bedroom Flat

Approximate internal area: **478 sqft 44 sqm**



Second Floor



While we do try our very best, floor plans are produced as a guide only and we take no responsibility for the precise accuracy with which any property is represented.

Effra Court, Brixton Hill, Brixton, SW2

