



New Park Road, Brixton, SW2

3 bedroom flat to let

£600 Per Week

Furnished

Property Details

Keating Estates are delighted to offer this sleek, modern 3 bedroom apartment located on a popular road just off vibrant and bustling Brixton Hill, with fantastic transport links into central London just moments away. This secure, modern development has the design team's stunning signature architectural finish and fantastic attention to detail, whilst being engineered to meet all the requirements of modern London living. This apartment benefits from private having a private, enclosed balcony or some with views out over the neighbouring roof tops and into central London. As far as locations go, it's fantastic. The development is located on New Park Road - a road popular for its proximity to Brixton to the North, Streatham Hill to the South and Balham to the West. New Park Road is tucked just off Brixton Hill, perfectly located for anyone wanting to be close to the action yet far enough away to retain sense of calm. Within a short walk is Brockwell Park, which many local residents champion as London's best green space, across which is Herne Hill station and it is also a sixteen minute walk down the hill to Brixton tube station and all the fun of Brixton's vast array of restaurants, cafes and dynamic nightlife. Tulse Hill station with rail links including to London Bridge is a similar distance away. Situated between Brixton Hill and Streatham Hill, the development has access to the extensive bus network on Brixton Hill which is just a minute's walk with multiple buses flowing down the hill and into central London and beyond.

Features

- Balcony
- Bright and airy throughout
- Close to Brockwell Park
- Secure modern development
- Open plan kitchen/living
- Close to Brixton High Street
- Three Double bedrooms

Council tax band D EPC rating B (82)





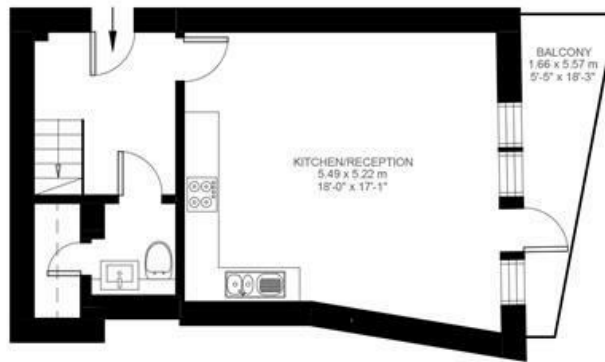
New Park Road

3 Bedroom Flat

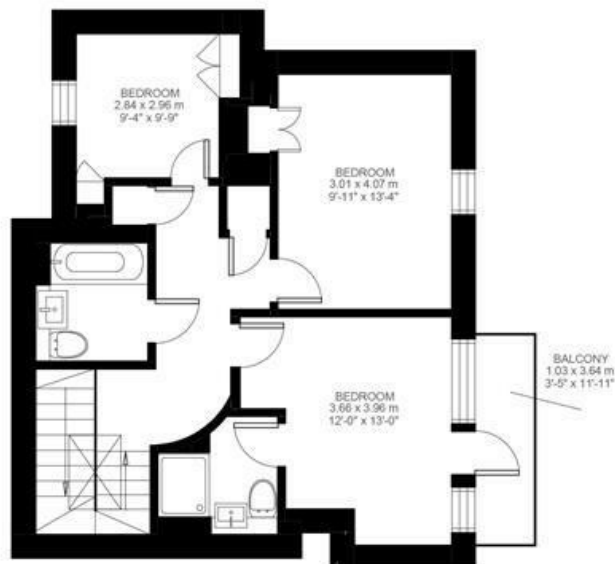
Approx internal area:

1040 sqft 97 sqm

While we do try our very best, floor plans are produced as a guide only and we take no responsibility for the precise accuracy with which any property is represented



Third Floor



Fourth Floor



New Park Road, Brixton, SW2

